



MIRRA CHAIR

MAXIMUM SUPPORT, MINIMAL FUSS

To develop a work chair conceived as a kind of second skin, the German design team at Studio 7.5 paired imaginative use of materials and shapes with precision engineering. The unusual result: a product that does more for less.

Mirra adjusts naturally to the body of the person who sits in it. A conforming molded polymer back supports the entire spine. Elastomeric seat suspension follows the contours of the body, distributes pressure evenly, and provides aeration. A flexible front edge adjusts seat depth to keep the lower back in contact with support built into the backrest. A few easy-to-use manual adjustments fine-tune the fit and feel.

With a clean and light profile that reflects thoughtful and eco-friendly use of materials and technology, Mirra eases compatibly into any environment and quietly goes to work.

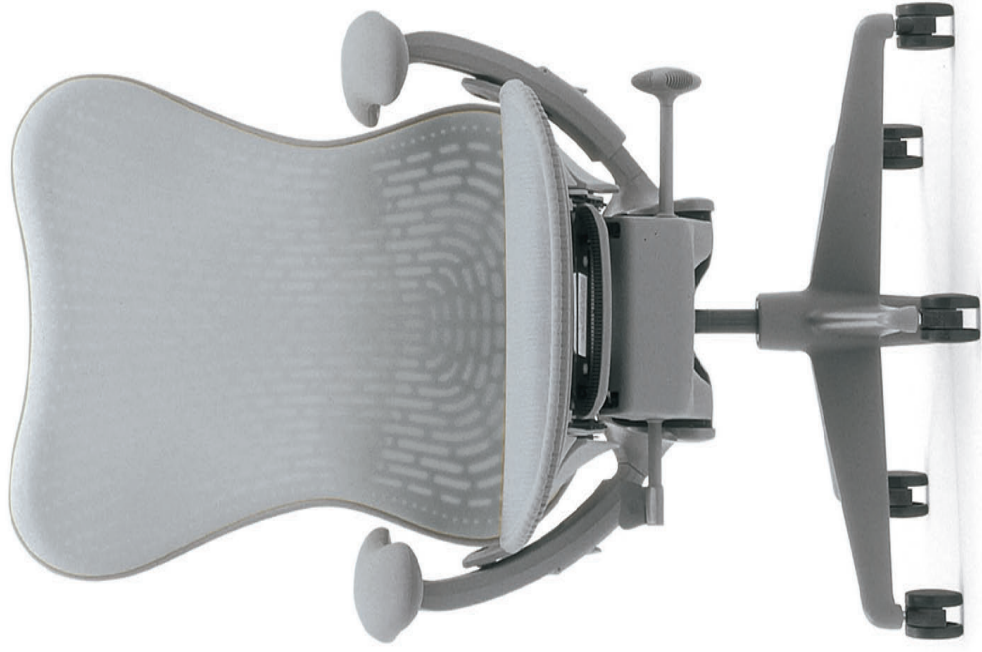




© 2010 Herman Miller, Inc. OMR200-2

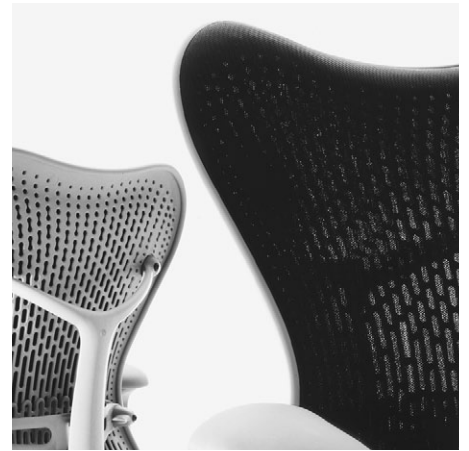


Mirra® Chairs





TriFlex™ Polymer Back



Latitude™ Back Upholstery



Full Range of Adjustments

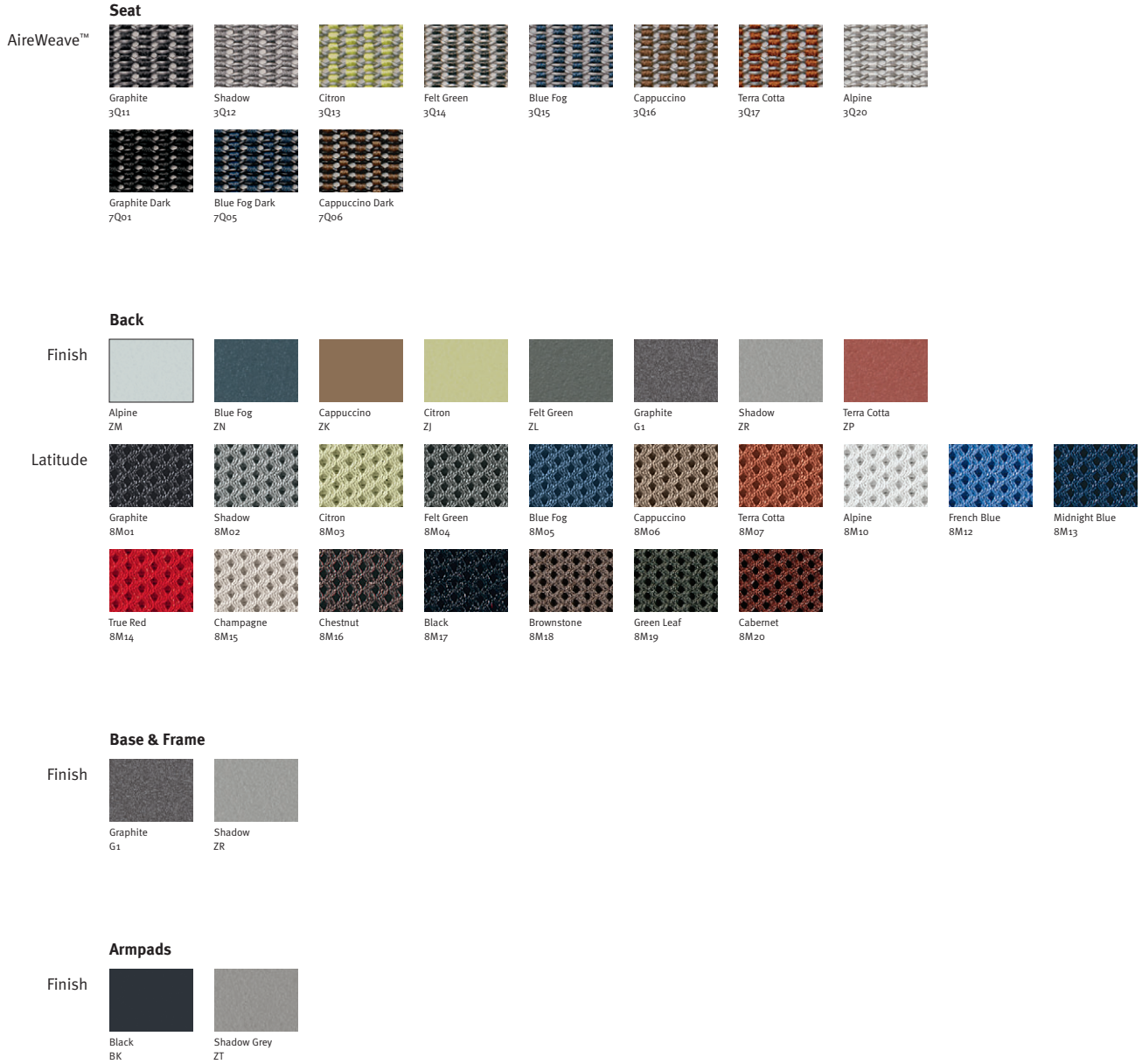


AireWeave™ Suspension Seating



Materials

Mix or match the colors of Mirra's seat, back, and optional Latitude™ back upholstery to complement an interior, add contrast, or make a design statement. The molded-polymer, perforated back has a subdued presence that lightens the scale. Foam-free Latitude provides aeration and maintains the back's total support without adding bulk to the profile.



Samples are representative of the material to be supplied and may not indicate an exact match; some variation may occur.
Visit hermannmiller.com for the current list of textiles and finishes, detailed application information, material specifications, and information on ordering samples.



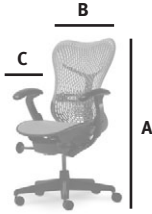
Design for the Environment:

- 96 percent recyclable and manufactured using 33 percent recycled content
- MBDC Cradle to CradleSM Gold certified
- GREENGUARD[®] certified
- level[™] 3 certified



Designers: Studio 7.5

Warranty: 12-year, 3-shift

**General Dimensions**

- A** height: 42.75 in.
B width: 27 in.
C depth: 17 in.

MIRRA CHAIRS hermanmiller.com/mirra

- Unique look and superior ergonomics at an attractive price.
- TriFlex[™] back and AireWeave[™] suspension conform to individual body dimensions for automatic comfort, aeration, and support.
- An eco-friendly chair that does more, requires less.

